



Zebedee 3D scanner

Tom Jovanovic and Debbie Crawford

Woodland vegetation – also applied in Bushfire sample plots



Zebedee

Can this 3D laser scanner be used to:

- **Visualise and record the spatial complexity?**
- **Can we derive information to determine biomass and other measures?**



What is Zebedee?

- Primary sensor is a 2D Hokuyo UTM-30LX laser scanner which measures distances to surfaces in the environment (43200 samples per second) with a separate inertial sensor
- A simple spring mechanism is used to convert the natural motion of the operator into scanning sweeps that result in a 3D field of view
- Specialized processing software interprets the raw data to estimate the motion of the scanner and generate a 3D point cloud model of the environment

Zebedee cont...

Therefore we have:

- **Lightweight (<700g), handheld 3D laser mapping system**
- **Highly portable – indoor and outdoor (Pisa example)**
- **Simply walk through an area to map it**
- **Results include 9% and 25% sampling of point cloud data. Full dataset available in .laz file as well as diagnostic information**
- **Does not rely on external positioning systems (no built in GPS useful in scanning indoors in buildings, caves etc)**
- **Relatively low cost**
- **Unit DEMO**

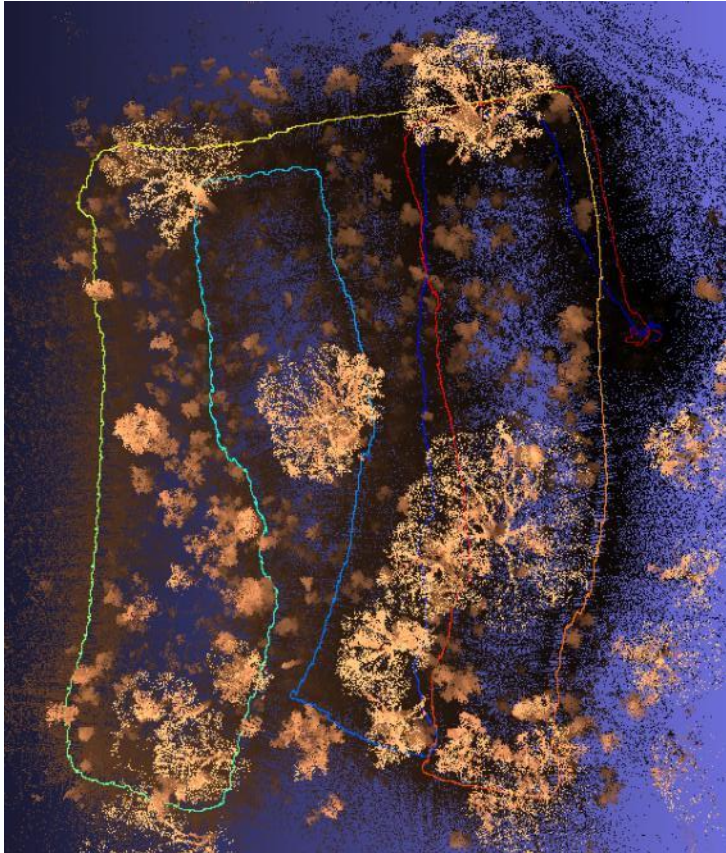
Zebedee – CSIRO system



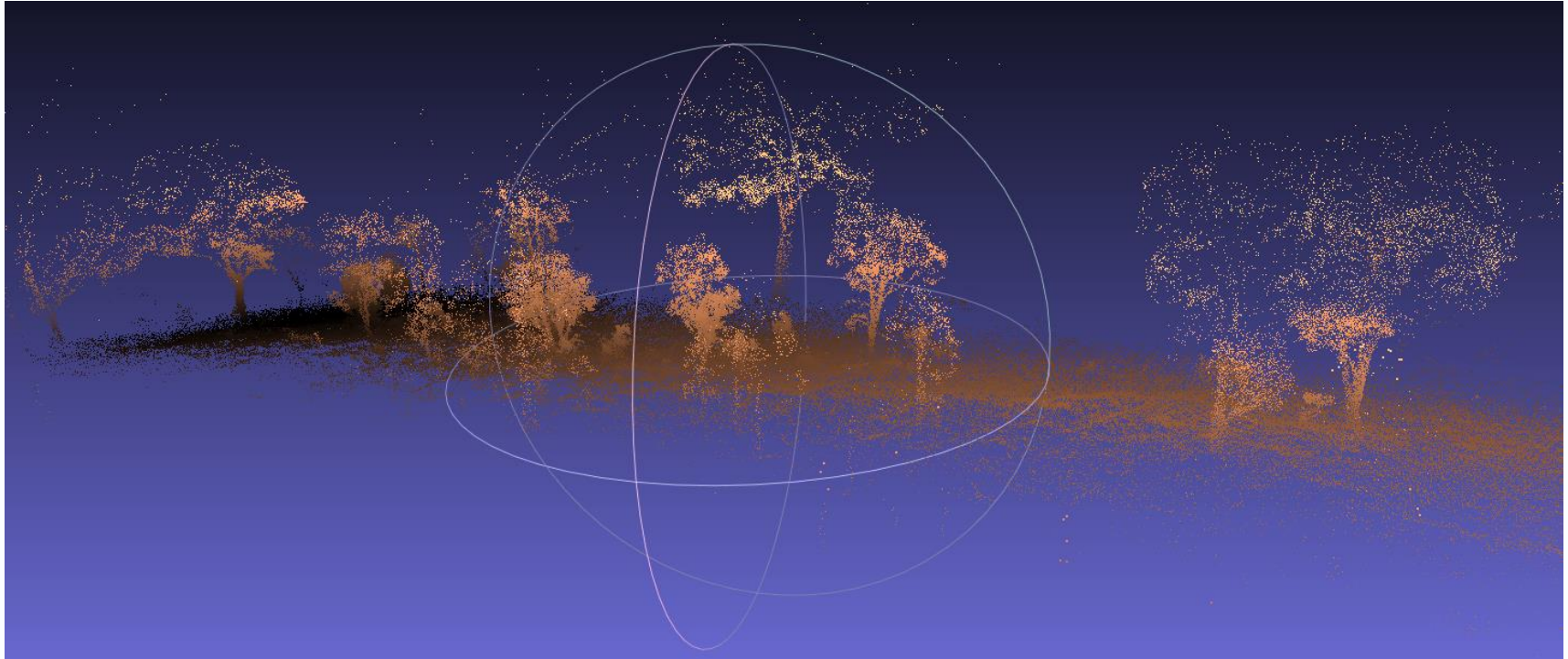
Using Zebedee



Plot ~ 30 x 30 m

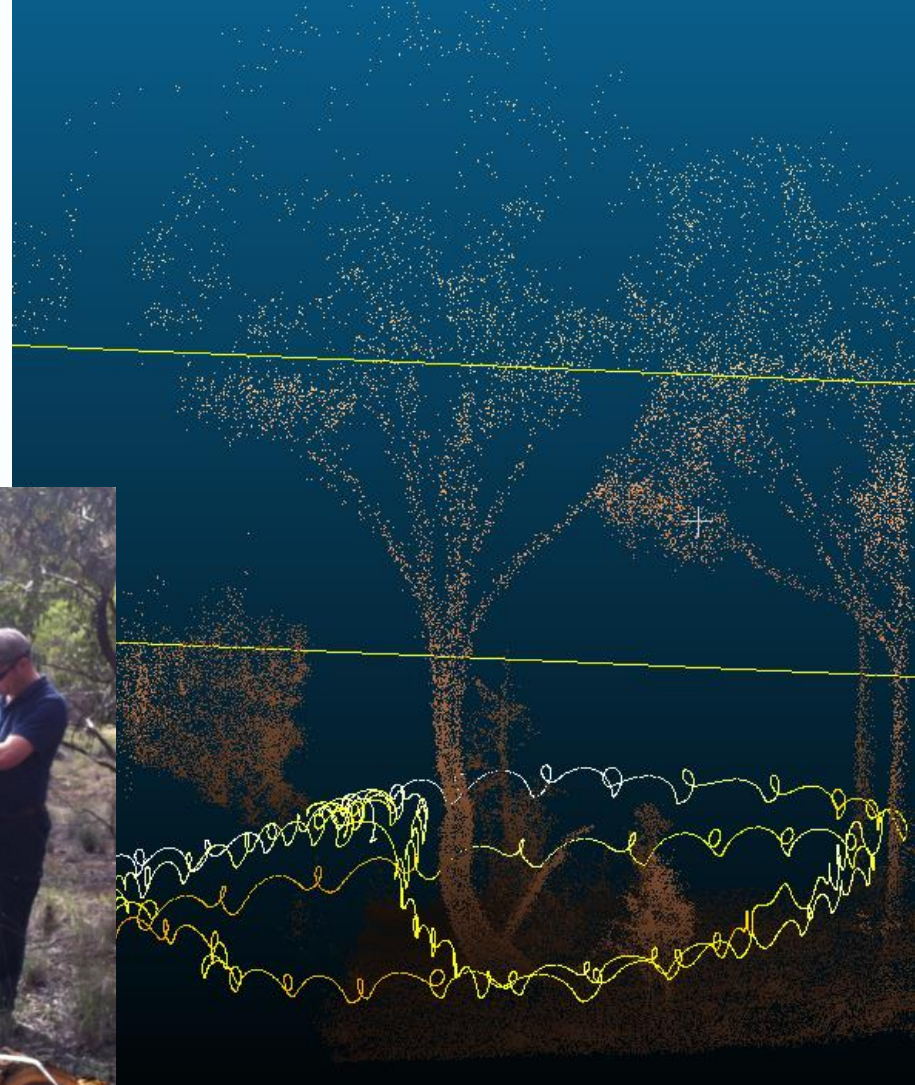


Transect scan

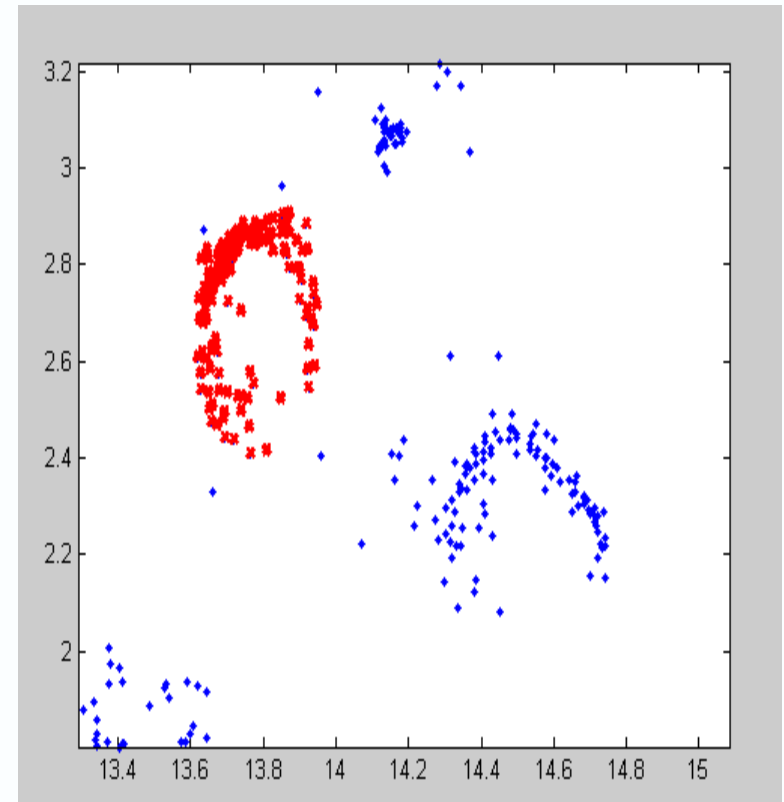


Also aligned with field sampling

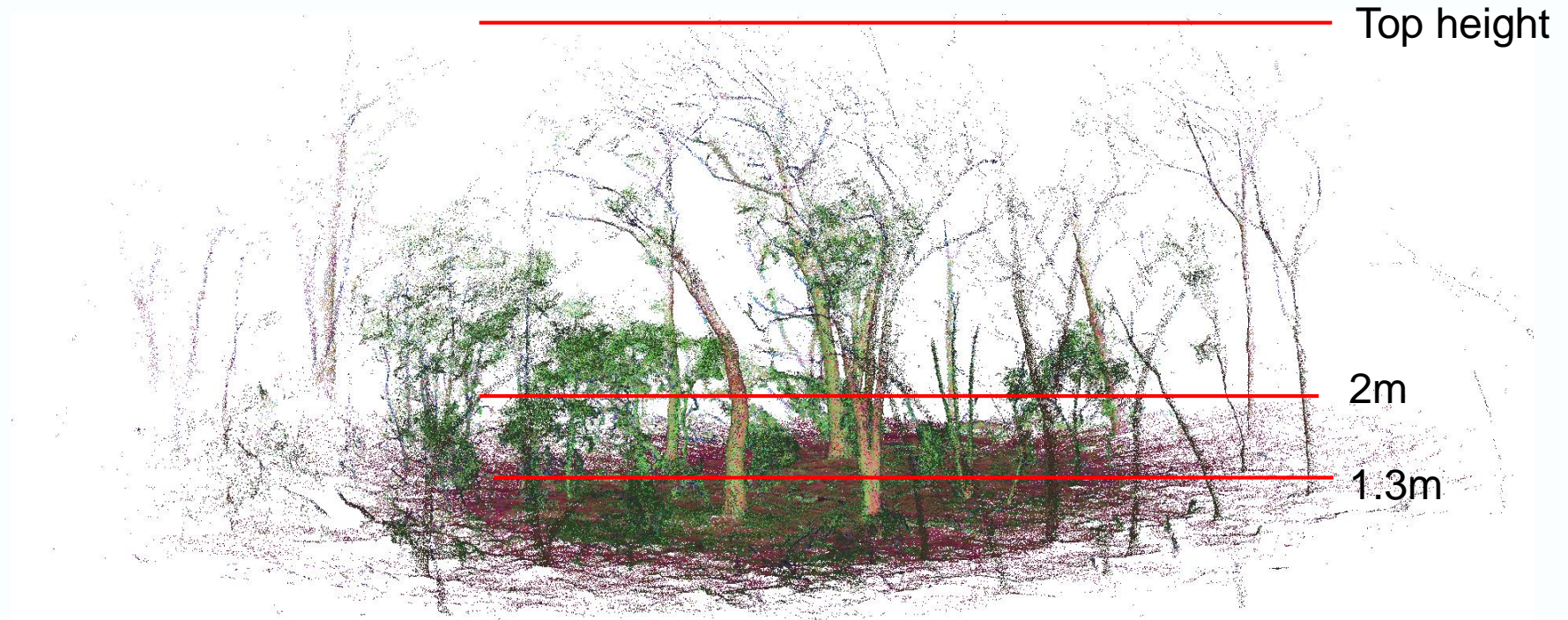
Individual tree



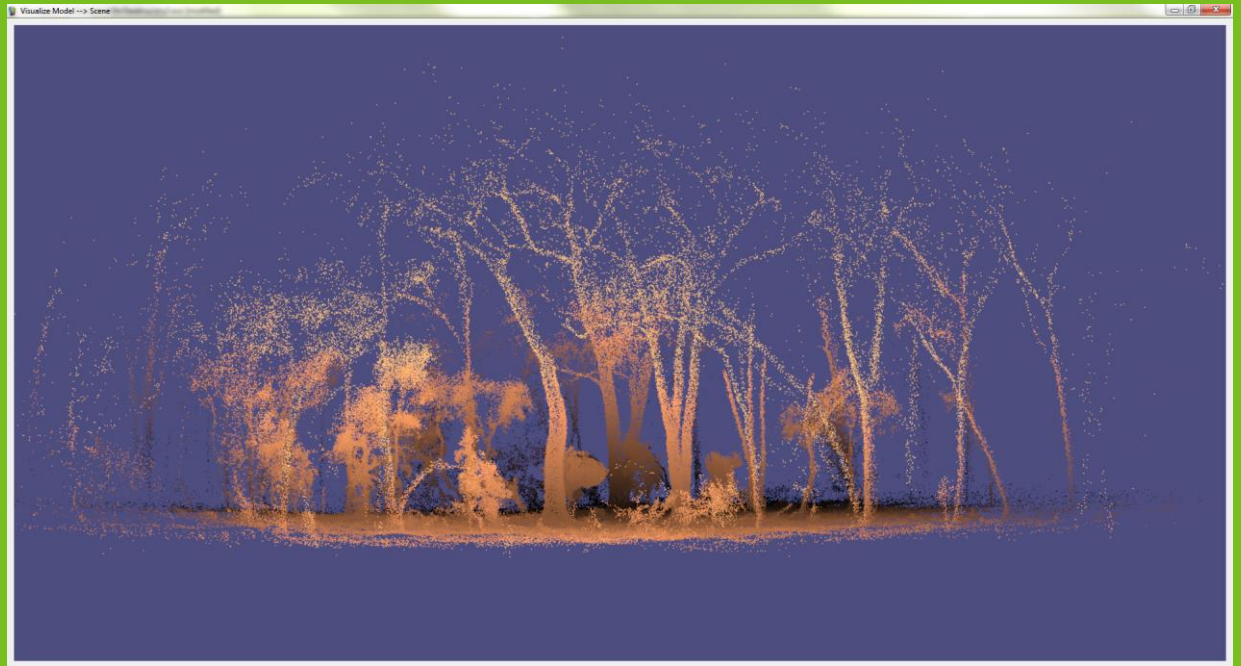
**Plot > slice at 1.3 to 1.35 cm – Suzanne
will talk more about this**



Slice and measure diameter of tree(s) and shrubs and grasses at different heights above ground level – provide counts – Automate?



Fly through – Himalayan pine at the National Arboretum (thanks Michael Schaefer)



Thank you

Forest and Landscape Processes and Risks
Landscape Intensification Program

t +61 2 6246 4218
e debbie.crawford@csiro.au
w www.csiro.au

LAND & WATER FLAGSHIP
www.csiro.au

